

July 30, 2024

Procter & Gamble
800 N Rice Ave
Oxnard, CA 93030

Reference; Inspection 7/29/2024

Attention: Scott Willcox

Gentlemen,

Thank you for the opportunity to assist you in the inspection of your #1X Paper Machine vacuum performance. My inspection was done with the motors locked out and lowering a digital boroscope down through each pump, visually inspecting all critical dimensions.

My inspection revealed the following data:

<u>#</u>	<u>Pump Size</u>	<u>Test Number</u>	<u>Service</u>	<u>Equip.#</u>	<u>Estimated Performance</u>
1	CL-9002	No Tag	1X	11G-122M	85%
2	CL-9002	69U1792	1X	11G-132M	90%

Sincerely,

No change in pump wear since the last inspection 3/23/2023.

Pump #3 was found with no orifices; Orifice size should be 9/16 with the spray nozzles. This will not increase the vacuum level but will drop the HP a little bit. Seal water pressure runs at 10 PSI. I'm 100% sure that the loss in vacuum has nothing to do with the performance of the pumps.

Tony Kanooth

C/c
(Page 1 of 3)

Precise Mechanical
2414 Black Gold Court
Houston, Texas 77073
Office: 281-319-5595
Fax: 281-319-5535
Toll Free: 844-276-NASH



Pump Number	Pump Size	Test / Serial Number	Equipment Number	Service/ Application
1	CL-9002	No Tag	11G-122M	1X

Pump RPM	Rated %	New Pump ACFM	Current ACFM	Lost ACFM
	85%			

Body

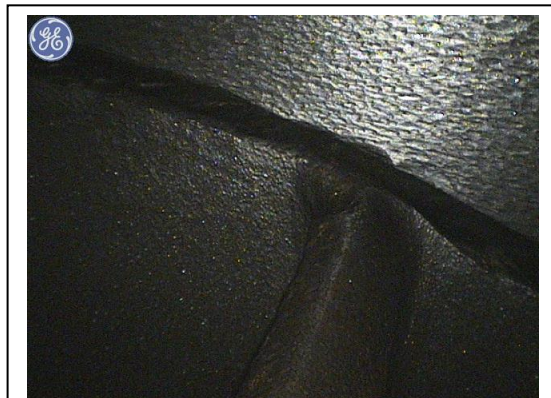
Body is clean and smooth. Rotor OD and body shroud are **way** over standard.

Rotor

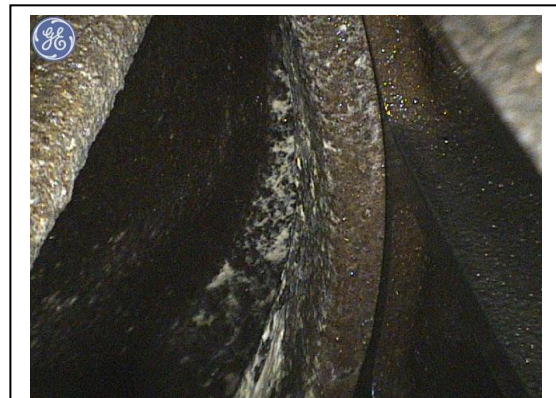
Rotor has very light scale in some areas. Rotor taper to cone clearance is standard.

Cones

Cones show normal wear with light stock deposits in inlet ports.



Drive End Rotor to Body



Drive End Rotor to Cone



Fixed End Rotor to Body



Fixed End Rotor to Cone



Pump Number	Pump Size	Test / Serial Number	Equipment Number	Service/ Application
2	CL-9002	69U1792	11G-132M	1X

Pump RPM	Rated %	New Pump ACFM	Current ACFM	Lost ACFM
	90%			

Body

Body is clean and smooth. Rotor OD and body shroud are standard.

Rotor

Rotor has light scale. Rotor blades are well rounded from carry over. Rotor taper to cone clearance is standard.

Cones

Cones show normal wear with light stock deposits in inlet ports.

